



Contents

Keeping it Simple	1
web links.....	1
Process.....	2
Session Pricing.....	3
Retouch and Alterations.....	3
Pricing	3
Corporate Pricing	3
Print Pricing	4
Print Finishes	4
Map and Directions	5

sketch studio of kent
716 North Mantua
330-608-1893
www.sketchkent.com

Keeping it Simple

1. Meet for a 20 min. consultation

2. The photo shoot takes place

3. Proof your images online or in the studio

4. Order Prints

Visit the following links to view our work or to contact us

website: www.sketchkent.com

blog: www.sketchkent.blogspot.com

galleries: www.sketchkent.smugmug.com

sketch studio of kent Portrait Process in detail

Schedule a Free 20 Minute Consultation Meeting.

- View a slideshow of different poses and location shots.
- Personalize your session. (Questionnaire)
- Review the process and cost.
- Schedule photo session.

Two Hour Photo Session

- Based on clients request the session is customized.
- You can have as many changes of cloths as you want.
- If you are not sure bring in all your favorites and we will help you!
- Any props that you want captured. (All of this is discussed in the consultation)
- Pay for session and retouch.***

Online Proofing

We load your images up to a secure, password protected gallery within a few days of your shoot. You will receive an email that will have the link to your gallery and a password. Click on the link and enter your password to view your images. This will also give you a good idea of what images and sizes you will order when you return to the image review consultation.

Image Review Consultation

After a few days of proofing your images and showing your friends and family how awesome they look, we will contact you to have you come in to review and order your images. This is a great time to let us know what specific retouch you want done, if any.

We are now offering custom framing! We cut the wood, join the corners, sand, paint, and customize and all of our work is guaranteed. You can check out our samples at the review.

For those of you who would like to order your prints on line...here is the process so you can order direct and have them shipped directly to you.

Once you are in your gallery:

- Select image
- Click on buy
- Select this photo

Then you can decide what size and click on the number you want.

If cropping is required for the size you can let them do it or you can adjust it once you have selected all your photos and sizes and are ready for checkout.

Once in checkout you will select your shipping preference. Retouch and processing takes 10 days plus your shipping preference time will be when you receive your order.



Session Prices [\$]

Seniors [up to 2 hours]	120
Families [up to 5 people]	60
Families [6-8 people]	80
Families [over 8 people]	100
Babies and infants	60
Pets	60

Retouch and Alterations [\$]

Special	up to 10 images with basic retouch [teeth/eyes - brightening]	50
	up to 10 images with moderate retouch [facial retouch]	125
Basic	minor "after capture" processing [teeth/eyes - brightening]	5 per image
Moderate	moderate "after capture" processing [facial retouch]	15 per image
Major	major "after capture" processing [braces, image alteration and custom design]	25 per image
Black & White	images converted from color to black and white	10 per image
Re sizing	low res [facebook, myspace, screensaver] high res [sent to yearbook]	10 per image
Rush Orders	images posted and retouched within 2 days	50
CD with Images	Up to 80 images burned to CD after \$100 print purchase	\$225

Corporate [\$]

Products	Proofs via email and images burned on disk	40 per product
Head and Shoulder	In Studio with image burned to disk or emailed	75
On location	Corporate images for marketing, manufacturing plants	100 per hour
Events	Outings, functions, sports	100 per hour
Corporate Retouch	Products, People, Facilities. Estimate provided in advance!	60 per hour



Print Prices

4 x 6	Price [\\$]
Luster	4
Glossy	4
Matte	4
Metallic	5

5 x 7	Price [\\$]
Luster	8
Glossy	8
Matte	8
Metallic	9.50

8 x 10	Price [\\$]
Luster	15
Glossy	15
Matte	15
Metallic	17

8 x 12	Price [\\$]
Luster	15
Glossy	15
Matte	15
Metallic	17

11 x 14	Price [\\$]
Luster	21
Glossy	21
Matte	21
Metallic	24

12 x 18	Price [\\$]
Luster	25
Glossy	25
Matte	25
Metallic	28

16 x 20	Price [\\$]
Luster	33
Glossy	32
Matte	32
Metallic	36

16 x 24	Price [\\$]
Luster	35
Glossy	32
Matte	32
Metallic	n/a

20 x 30	Price [\\$]
Luster	41
Glossy	36
Matte	36
Metallic	41

24 x 36	Price [\\$]
Luster	n/a
Glossy	55
Matte	55
Metallic	55

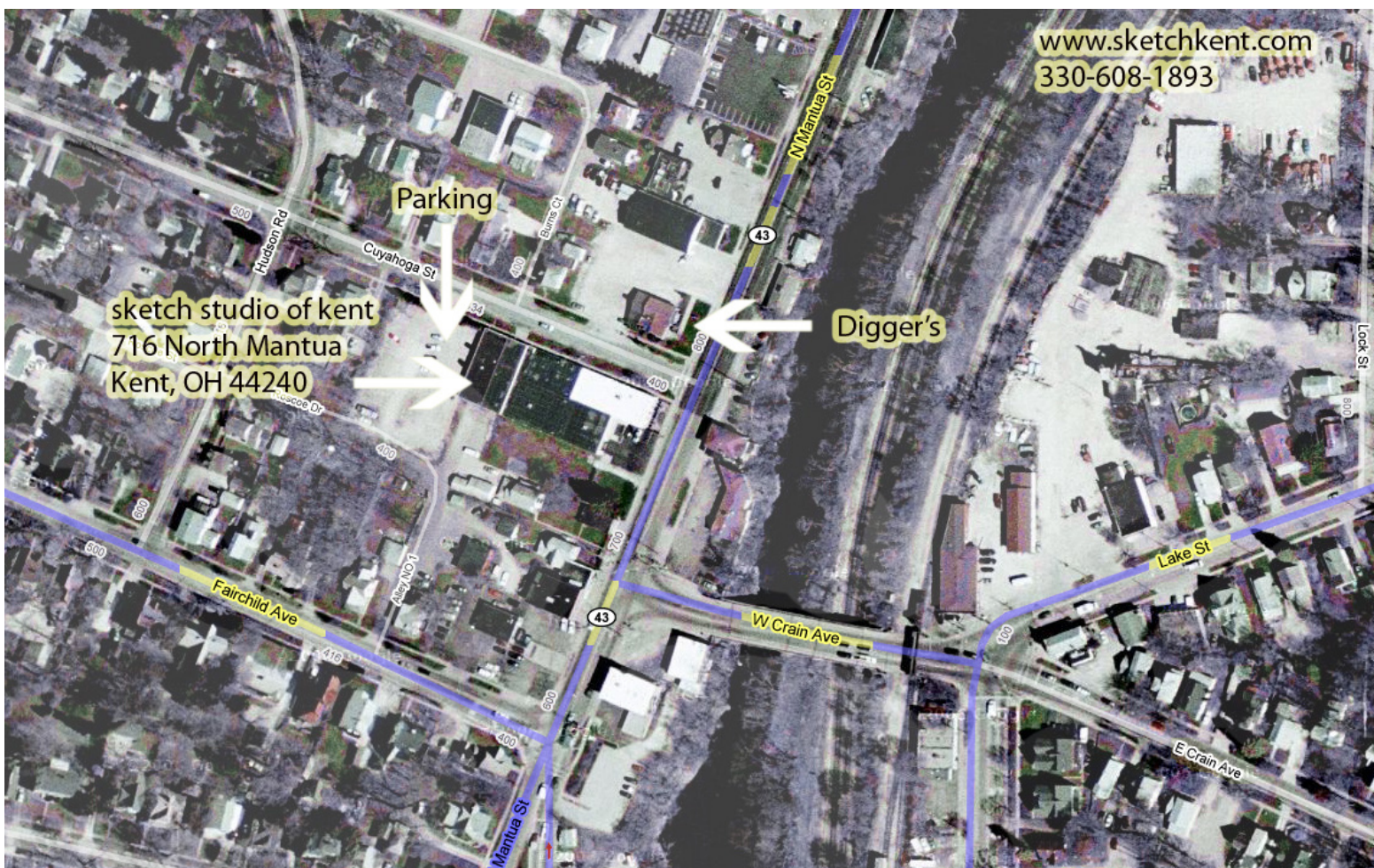
30 x 40	Price [\\$]
Luster	n/a
Glossy	68
Matte	68
Metallic	n/a

4 Wallets	Price [\\$]
Luster	5
Glossy	5
Matte	5
Metallic	n/a

Canvas, less common print sizes and merchandise available online

Print Finishes

Luster	Sized in inches. Lustre is a premium finish on a heavier paper. It offers the vibrant colors of glossy with the fingerprint-resistant finish of matte. Printed on Kodak Supra Endura paper.
Glossy	Sized in inches. Glossy is a shiny finish and prints appear brighter than Matte. Kodak paper.
Matte	Sized in inches. Matte is a more muted finish, and prints will appear darker than Glossy or Lustre. Printed on Kodak Edge paper.
Metallic	Sized in inches. Printed on Kodak Endura Professional Metallic paper for a rich, distinctive look with a huge WOW! factor.



sketch studio of kent is a full-service photography studio located in the newly refurbished warehouse in the back of the H-W Fairway building at 716 North Mantua (parking in rear of building off of Cuyahoga Street.)